

Vacuum/Blowing Ironing Tables

FIT6A, FIT6B



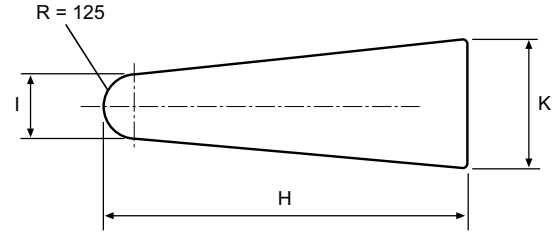
Features and benefits

- Heated, to keep the working surface dry
- Utility shape, for general purpose

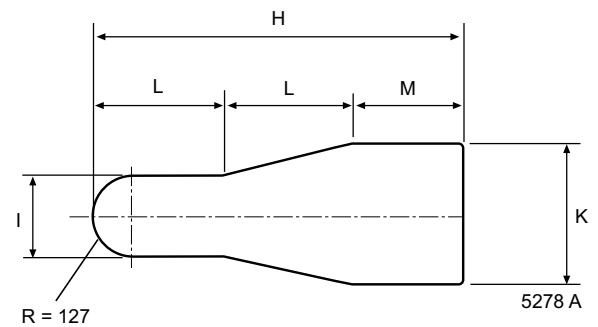
Main options

- Steam electric iron c/w separator versatile
- Integral steam boiler for simple installation
- Free standing boiler, for simple installation
- Steam or steam/air gun for spotting
- Sleeve arm for pressing awkward shapes
- Spotting arm eases the removal of spots
- Overhead gantry to support iron hoses
- Iron balancer, reduces operator fatigue
- Light, illuminates the working area
- Additional pedals (vac/blow) for dual side operation
- Additional swivelling iron rest for operator convenience

Electrical connections		FIT6A	FIT6B	Built-in boiler
Voltage				
208-240V 1 AC 50/60 Hz	kW	1.5	1.5	-
208-240V 3 AC 50/60 Hz	kW	-	-	4
400-415V 3N AC 50 Hz	kW	-	-	4
Steam and air connection				
Steam	DN	10	10	
Rec. steam pressure	kPa	550	550	
Steam consumption	kg/h	3	3	
Condensate	DN	15	15	
Compressed air	DN	6	6	
Rec. air pressure	kPa	500-700	500-700	
Air consumption	l/min	120	120	
Shipping data				
	net, kg	180	180	
	crated, kg	210	210	
	boxed, kg	250	250	
Dimensions in mm				
A	Width	2150	2150	
B	Depth	470	470	
C	Height	1535	1535	
D		85	85	
E		1300	1300	
F		930	930-	
G		810	810	
H		1300	1300	
I		250	300	
K		500	500	
L		-	470	
M		-	360	
<ol style="list-style-type: none"> 1 Control panel 2 Electrical connection 3 Steam connection 4 Condensate 5 Air connection 				



FIT6A shown



FIT6B shown

